

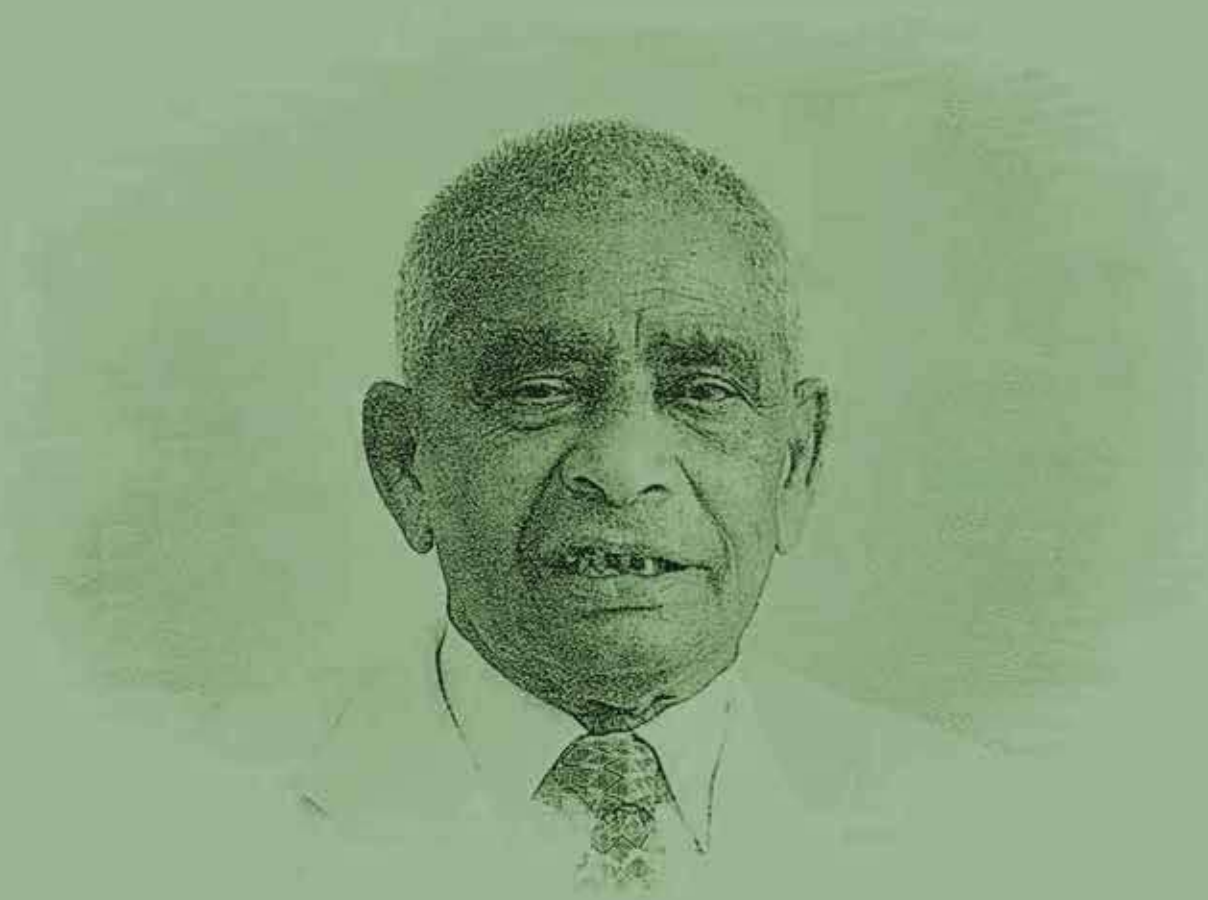
“Let’s Join Hands  
And March Towards A New Dawn,  
Let’s Build A Dream.”



# HAPBCO LLC

- Installation Of Heavy Industry Machinery For Power, Steel, Cement, Lime, Minerals Etc...
- Industrial Upgradation And Retrofitting
- Industrial Civil Constructions
- Industrial Scheduled And Breakdown Maintenance Jobs
- On-shore And Off-shore Pipe Lines
- Installation Of Oil & Gas & Petrochemical Works
- Residential and Commercial buildings
- Facilities management





Founder

---

Late. Hajee A.P. Bava

“ Let’s Join Hands  
And March Towards A New Dawn,  
Let’s Build A Dream.”

# NATURE OF WORKS

## Civil Construction

- Piling
- Dewatering & Water Proofing
- Shoring
- Slip Form Rcc Storage Silos
- Pre-stressing
- Industrial Foundations
- Super Structures

## Structural And Plate Work

- Fabrication
- Industrial Protective coating
- Sheeting and Cladding
- Erection

## Equipment Installation & Maintenance

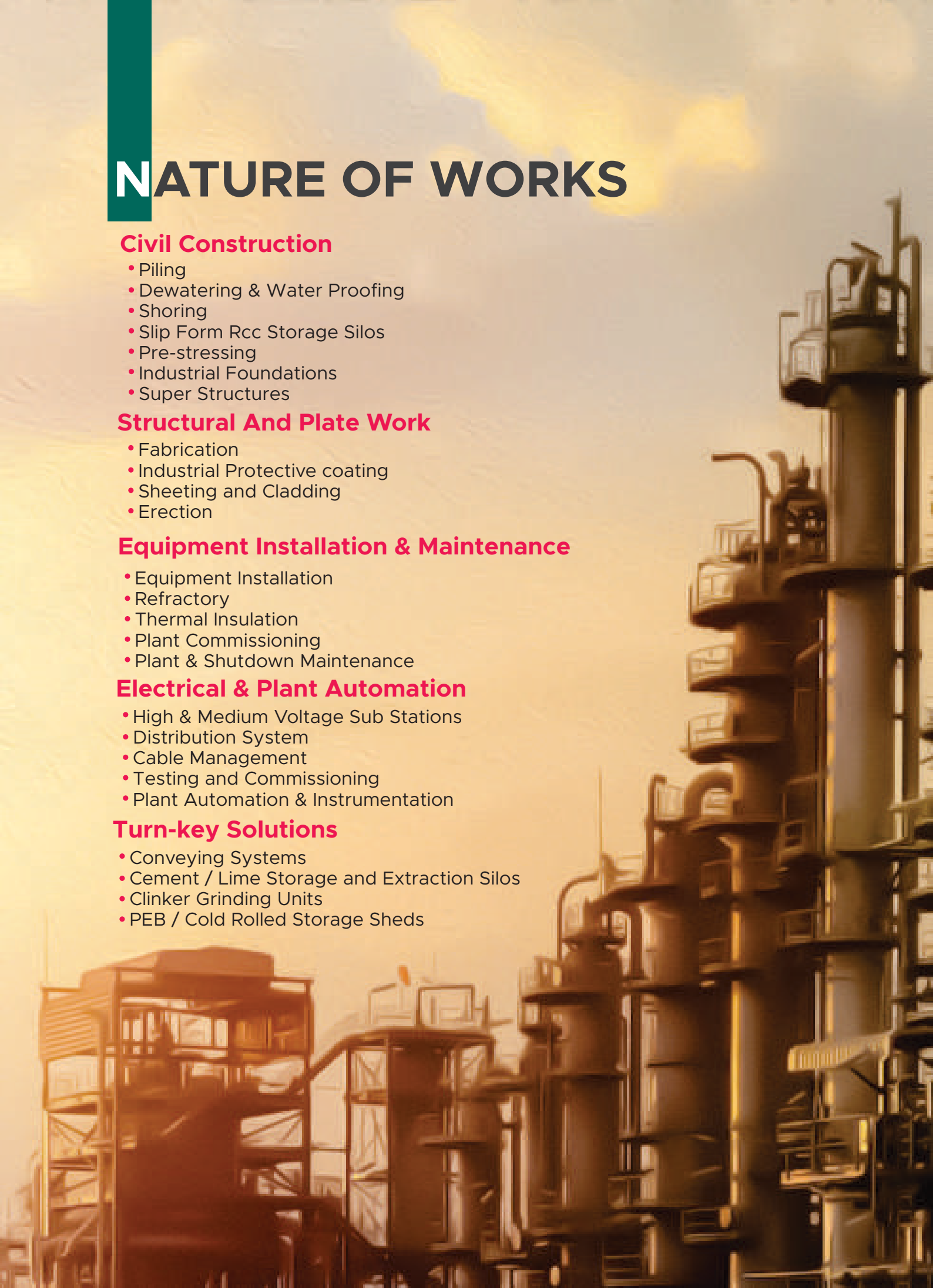
- Equipment Installation
- Refractory
- Thermal Insulation
- Plant Commissioning
- Plant & Shutdown Maintenance

## Electrical & Plant Automation

- High & Medium Voltage Sub Stations
- Distribution System
- Cable Management
- Testing and Commissioning
- Plant Automation & Instrumentation

## Turn-key Solutions

- Conveying Systems
- Cement / Lime Storage and Extraction Silos
- Clinker Grinding Units
- PEB / Cold Rolled Storage Sheds





# | VISION, MISSION



## Vision, Mission And Values

Our core values are an integral part of all the activities and functions we engaged in: These values drive our business and they make what we are and what we aim to become.

## Vision

To be the world's premier engineering construction company by delivering projects and services to the global marketplace.





## Mission

To safely deliver any project, any time, in any environment for the benefit of our customers, shareholders, employees and the community we serve.



## Core Values

Uncompromising commitment to Quality, Health, Safety and Environment.  
Relationships based on Mutual Trust, Respect & Integrity.  
Transparency, Accountability & Discipline in business.  
Risk Awareness and Safety in all functions.

Our Mission and Vision define the commitment to internal and external customers and our pledge to become the best in our core functional areas of work.

# | SAFETY

Safety is a value that is close to our heart and one that is a fundamental part of all our projects and activities. Over the last few decades Safety has become etched in our culture. That's why APBAVA has an unique record of achieving zero lost-time incidents in 90 percent of our projects worldwide. We strongly believe that every accident is preventable. Every employee has a stop-work authority- if it's not safe, don't do it. Its not just within our company, but we ensure that our subcontractors and partners also adopt the safety philosophy.

The safety philosophy ensures that our workers and the community we work in are safe during work and off work time too. This philosophy helps us in designing and implementing safe health measures. Thus, we make sure that we keep our costs low and increase productivity. For us, human resource is the most valuable resource we operate with. Hence safety, security and well being of our people and their families and the community we associate with, are given paramount importance.







## Safety Mission

Building a national movement on Safety, Health and Environment to prevent and mitigate loss of life, human suffering and economic losses and providing support services.



## Safety Vision

Serving the society by creating a preventive culture, scientific mindset and organized approach to Safety, Health and Environment issues.





# | QUALITY POLICY

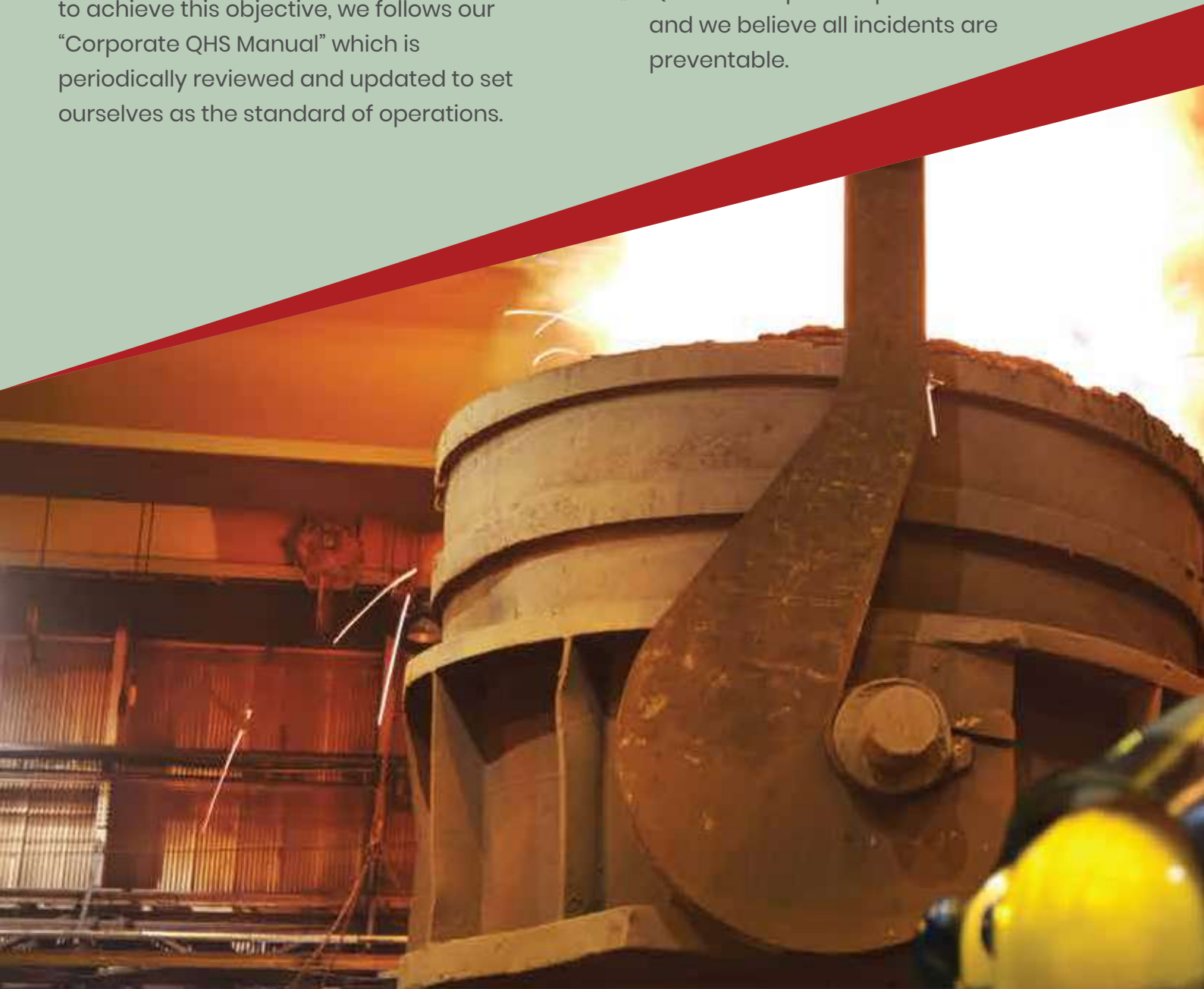
We endeavour as a leading Industrial Construction Services Company by understanding client's specific project requirements in compliance with relevant and applicable standards prevailing in the country of operations and to prevent any non-conformity of those services that may occur during the implementation.

Bava Middle East LLC & Group Companies are committed to a policy of protecting the health and safety of its own employees, Client's employees and other third parties involved during the project execution by complying with our own QHS policy to achieve this objective, we follow our "Corporate QHS Manual" which is periodically reviewed and updated to set ourselves as the standard of operations.

# | QUALITY PLAN

**We are guided by following principles on QHS Policy:**

- ⚙ QHS is a Line Management responsibility
- ⚙ QHS improvements are being sought from all employees through periodical review, implementation by effective monitoring and documentation.
- ⚙ QHS assumes as equal priority with other supervisory duties thus forming integral part of our operations.
- ⚙ QHS is an important part of our business and we believe all incidents are preventable.



# | SULTANATE OF OMAN



## ASSOCIATED INDUSTRIES LIMITED SFZ SALALAH, OMAN

### Project Highlights

Project:	Construction of 440 TPD Lime Plant
Client	Associated industries Limited SFZ Salalah Oman
Plant and Machinery Supply	Cimprogetti , Vinar and Thermax Consultant : Cubiz & M/S Omani Engineering
Description of Work	Construction of 440 TPD Lime Plant works including Civil, Structural Fabrication and Erection Equipment Erection and Plant Automation
Time Schedule	03 Year
Period	2013 - 2015

### Scope of Works

Earth Work Excavation	15200 M <sup>3</sup>
Back Filling	10260 M <sup>3</sup>
Shettering	12,500 Cum
Reinforcement	580 MT
Concreting	5411 Cum
Block work and Plastering Painting	16405
Fabrication and Erection	1260 MT
Sheeting and Cladding	8100 Sqm
Piping	3722 Inch Mtr
Electrical - installation Testing and Commission of DG ATS MCC VFD Capacitor Breaks PLC and UPS System	

### Brief Description of the Project

Kiln Shel Rolling and Supporting Stools Fabricated at Site

Fabrication of Structure and Equipment with High Paintin Specifications

# SULTANATE OF OMAN |



## OMAN CEMENT COMPANY (SAOG) MUSCAT, OMAN

### Project Hightights

Project:	Construction of 150 TPH Grinding Mill No - 005
Client	FLS Midth India
Plant and Machinery Supply	FLS midth India
Consultant	Erecom Engineers PVT, Semac
Description of Work	Construction of 150 TPH Cement Grinding Mill No-005 works including Civil RCC Foundations, Silos Roads & Drains Fabrication and Erection of Steel Structure Equipment Cement Mil No - 005
Time Schedule	18 Months
Period	2014 - 2016

### Scope of Works

Earth Work Excavation	21000 Cum
Back Filling	9000 M³
Shettering	29000 Sqm
Reinfortment	1850 MT
Concreting	16000 Cum
Block work and Plastering Painting	13500 Sqm
Fabrication and Erection	2700 MT
Sheeting and Cladding	19500 Sqm
Fabrication Dudcts & Chuts	400 MT
Piping	4200Inch Mtr
Electrical - installation Testing and Commission of DG ATS MCC VFD Capacitor Breaks PLC and UPS System	

### Brief Description of the Project

Civil Construction, Steel Structure, Fabrication and Erection, Equipment Installation and commissioning, Electrical and Plant Automation for Grinding Plant 5 th Unit .



# | SULTANATE OF OMAN



## AL MADINA CEMENT, BURAIMI, OMAN

Project Highlights		
Client	Al Madina Cement, Buraimi, Oman	
Plant and Machinery Supply	Beijing Lianchuang Tech, Co. Ltd, China	
Consultants	ERCOM - INDIA	
Description of Work	Construction of Civil RCC Structure, Fabrication and Erection of Steel Structures, Equipment Erection, Electrical & Plant Automation System for 2500 TPD Cement Plant.	
Time Schedule	18 Months	
Period	2009-2010	
Scope of Works		Brief Description of the Project
RCC Civil Works	45,000 M <sup>3</sup>	Sultanate of Oman's 1st private sector cement plant (AMC) at Al Buraimi, the north western town of Oman, bordering Al Ain, Abu Dhabi Emirate.
Reinforcement Steel	5,000 MT	
Fabrication & Painting	1,500 MT	
Erection	1,500 MT	Al Madina Cement Co. LLC owns Oman Chemical & Pharmaceuticals Co. LLC, one of the well established businessgroups in the Sultanate is of Oman.
Electrical & Plant Automation		
		The Cement Plant is constructed with 2500 TPD capacity, with a scope for similar 2500 TPD capacity second line construction in future.
		RCC Clinker silos 2 Nos each of 11,000 Tons Capacity.

# SALALAH

## AL-NAMARIQ CO.FOR MINING (SFZ) LLC – SALALAH, OMAN



PROJECT NAME	CONSTRUCTION AND INSTALLATION OF 300 TPD LIME CALCINATION PLANT
CLIENT	M/S. AL-NAMARIQ CO. FOR MINING (SFZ) LLC, SALALAH, OMAN
CONSULTANT	M/S. MAERZ & M/S.PARGET MAKINA & M/S. SECMEC
OEM SUPPLIER	M/S. MAERZ & M/S.PARGET MAKINA
SCOPE OF WORK	<ul style="list-style-type: none"><li>• Fabrication and Installation of 300TPD MAERZ LIME KILN</li><li>• Civil construction work of Process Buildings.</li><li>• Fabrication and installation of Structural &amp; Plate works</li><li>• Equipment Installation</li></ul>
	<ul style="list-style-type: none"><li>• Electrical &amp; instrumentation installation</li><li>• Equipment Insulation</li><li>• Refractory &amp; cladding installation</li><li>• Compressed Air, Natural Gas &amp; Hydraulic</li><li>• Pipeline installation</li></ul>



# DUQM

## DUQM CEMENT FACTORY LLC DUQM, OMAN



PROJECT NAME	80TPH CEMENT CLINKER GRINDING UNIT
CLIENT	M/S. DUQM CEMENT FACTORY LLC, DUQM
CONSULTANT	M/S. POINTECH
OEM SUPPLIER	M/S. PROMAC

SCOPE OF WORK	• Civil construction work of Process & Non process buildings.
	• Fabrication and installation of Structural & Plate works
	• Equipment Installation
	• Electrical & instrumentation installation
	• Insulation & Cladding



# SALALAH

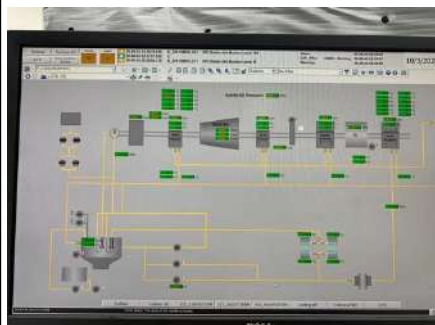
## RAYSUT CEMENT COMPANY SALALAH, OMAN



PROJECT NAME	09 MW WHR BASED POWER PLANT FOR LINE-II, LINE-III & LINE-IV
CLIENT	M/S. RAYSUT CEMENT COMPANY, SALALAH, OMAN
CONSULTANT	M/S. HOLTECH
OEM SUPPLIER	M/S. SINOMA OVERSEAS DEVELOPMENT CO., LTD
SCOPE OF WORK	•Structural Fabrication
	•Structural & Equipment Installation
	•Electrical & instrumentation installation
	•Refractory & cladding installation
	•Pipeline installation

NAME	09 MW WHR BASED POWER PLANT FOR LINE-II, LINE-III & LINE-IV
CLIENT	M/S. RAYSUT CEMENT COMPANY, SALALAH, OMAN
CONSULTANT	M/S. HOLTECH
OEM SUPPLIER	M/S. SINOMA MIDDLE EAST
SCOPE OF WORK	<ul style="list-style-type: none"> <li>▪ Transformer &amp; 11kv MV Switchgear installation</li> <li>▪ LV Switch gear installation (MCC, Capacitor Bank, LDB)</li> <li>▪ 11kv Turbine &amp; Generator erection along with Control, Synchronization metering panels installation.</li> <li>▪ DCS server, IO, field panel and CCR installation</li> <li>▪ Cable tray installation.</li> <li>▪ MV/LV/control/signal laying &amp; terminations.</li> <li>▪ Lighting, Earthing &amp; Lightning arrestor installation.</li> <li>▪ All process instruments, tubing and loop checking.</li> <li>▪ Testing &amp; Commissioning Assistance</li> </ul>

#### PROJECT PHOTOS:





# SALALAH

## GULF GYPSUM PRODUCT LLC SALALAH, OMAN



PROJECT NAME	CONSTRUCTION OF 560TPD GYPSUM POWDER CALCINATION UNIT
CLIENT	M/S. GULFGYPSUM PRODUCT LLC, SALALAH, OMAN
CONSULTANT	M/S. 3-DIMENSION
OEM SUPPLIER	M/S. DCI-HENGSHUI DECHENG MACHINERY & EQUIPMENT CO.LTD

SCOPE OF WORK	<ul style="list-style-type: none"><li>• Structural Fabrication</li><li>• Fabrication and Installation of Steel Silos</li><li>• Civil construction work of Process Buildings.</li><li>• Structural &amp; Equipment Installation</li><li>• Pipeline installation</li></ul>
---------------	--



# MUSCAT

## OMAN CEMENT COMPANY MUSCAT, OMAN



PROJECT NAME	ALTERNATIVE FUEL FOR CLINKER
CLIENT	M/S. OMAN CEMENT COMPANY, MUSCAT, OMAN
CONSULTANT	M/S. NCCBM
OEM SUPPLIER	M/S. BTIEC

### SCOPE OF WORK

- Civil construction
- Structural Fabrication
- Structural & Equipment Installation
- Electrical & instrumentation installation

# SOHAR

## SANVIRA CARBON (FZC) LLC SOHAR FREEZONE, OMAN



PROJECT NAME	750 TPD PETCOKE CALCINATION SYSTEM FOR CALCINED PETROLEUM COKE PLANT
CLIENT	M/S. SANVIRA CARBON (FZC) LLC, SOHAR FREE ZONE, OMAN
CONSULTANT	M/S. FLSMIDTH
OEM SUPPLIER	M/S. FLSMIDTH

SCOPE OF WORK	• Installation of Rotary Kiln
	• Installation of Rotary Cooler
	• Installation of Vertical Incinerator



# | SULTANATE OF OMAN

## MAINTENANCE WORKS



Conversion of ESP to Bag house at Raysut Cement Company - Salalah - OMAN



Conversion of ESP to Bag house at Raysut Cement Company - Salalah - OMAN



Conversion of ESP to Bag house at Raysut Cement Company - Salalah - OMAN



Conversion of ESP to Bag house at Raysut Cement Company - Salalah - OMAN



Dis - malting and Erection of Cement Mill Separator at Oman Cement - Muscat



Dis - malting and Erection of Cement Mill Separator at Oman Cement - Muscat



Dis - malting and Erection of Cement Mill Separator at Oman Cement - Muscat



# | UNITED ARAB EMIRATES



## ABG STAR CEMENT COMPANY LLC RAK, UAE

Project Highlights		
Project	Construction of 4.75 MW Power Plant – Waste Heat Recovery System	
Client	ABG Star Cement Company LLC RAK – UAE	
Plant and Machinery Supply	FLSmidth, India	
Description of Work	Civil Construction, Fabrication, Painting & Erection of Structural Steel, Plate work, Equipment Erection, LP & HP Piping and E & I	
Time Schedule	12 Months	
Period	2012 – 2013	
Scope of Works		Brief Description of the Project
Earth Work	3300	Cyclone Building 32 Mtr Height with RCC with 05 Floor Fabrication and Painting at Site
Reinforcement	300 MT	
Foamwork	9500 M2	Boiler Tube Erected with 500 MT Capacity Mobile Crane
Concrete Works	2500 M3	
Water Proofing	500 M2	Cyclone and Expansion Joints Fabrication at Site
Fabricatin and Painting	1000 MT	
Erection	2100 MT	
LO & HP Piping	20,000 Inch Dia	
E & I Installation Refactory Works		

# UNITED ARAB EMIRATES |



## ABG ARABIAN CEMENT COMPANY LLC, UAE

### Project Hightights

Client	ABG Arabian Cement Company LLC Abu Dhabi, MUaffa 41
Plant and Machinery Supply	FLSmidth , india
Description of Work	Fabrication, Painting and Erection of 1100 MT Capacity Cement Storage Silos and its Extraction System
Time Schedule	08 Months
Period	2010- 2011

### Scope of Works

Structural Erection	1100 MT
Painting	1100 MT
Fabrication	1100 MT
Equipment Erection	150 MT
Commissioning	

### Brief Description of the Project

Fabrication of Structural 300 MT sand Blasting Painting Structural Erection 300 MT, Equipment 150 MT, 28 Mtr Cement Storage Silo Erection



## ABG AJMAN CEMENT FACTORY LLC – AJMAN, UAE

### Project Highlights

Project:	Clinker Storage shed
Client	ABG Star Cement (Ajman Cement Factory )
Consultant	Capital Engineering LLC - Sharjah
Plant and Machinery Supply	AP Bava Construction Company LLC
Description of Work	Engineering, Supply and Construction of PEB shed 165 MTR x 40MTR along with MEP Work
Time Schedule	12 Months
Period	2016 - 2017

### Scope of Works

Earth Work Excavation	3500 M3
Reinforcement	275 MT
Formwork	6000 M2
Concrete Work	1700 M3
PEP Shed Supply and Erection	150MT
Sheeting and Cladding	15000 M2
Electrical, Fire Fighting and Fire Alarm Works	

### Brief Description of the Project

Engineering Supply and Constructions of Clinker storage Shed Including with MEP Work along with all Required GOVT. Approvals



# UNITED ARAB EMIRATES |



## EMIRATES MACRONI FACTORY – AL QUOZ INDUSTRIAL AREA 1 – DUBAI, UAE

Project Highlights	
Client	Emirates Macroni Factory LLC – Dubai – UAE
Consultant	Buhler Germany
Plant and Machinery Supply	Buhler Germany
Description of Work	Installation Macroni Production Plant 1500 TON
Time Schedule	6 Months
Period	2012 – 2013
Scope of Works	Brief Description of the Project
Unloading	Unloading and unpacking all the imported materials Pre assembly at site Erection of complete Macroni Production line and Commissioning Assistance
Marking	
Site Assembly	
Full Assembly	

# | UNITED ARAB EMIRATES



## KAIROS TEXTILE INDUSTRIES LIMITED – KIZAD – A8, ABU DHABI

Project Highlights	
Project:	Construction of Manufacturing High Grade Polyester Staple fiber
Client	Kairos Textile industries
Consultant	Capital Engineering
Description of Work	Construction of Manufacturing High Grade Polyester Staple fiber Plant
Time Schedule	On Going
Period	2018 On Going
Scope of Works	Brief Description of the Project
Earth Work Excavation	Construction of Main Building G6+ With RCC Construction of Office Building, Guard Room, Strom Water Tank With RCC. Including MEP Work along with all Required GOVT. Approvals.
Back Filling	
PCC	
RCC	
Sheeting and Cladding	



## NAEL CEMENT FACTORY PRODUCTS – AL AIN, ABU DHABI

### Project Hightights

Project:	80 TPH grinding unit dismantling work	
Client	Nael general Contracting Company LLC.	
Description of Work	80 TPH Cement Grinding Plant dismantling - Structural, Equipment, Packing & Loading	
Time Schedule	1.5 Months	
Period	2016	
Scope of Works		Brief Description of the Project
Structural and Plate Dismantling	400 MT	Completed with in 45 Days.  Entire dismantling and loading Completed within 45 Days.
Equipment Dismantling	470 MT	
Grinding Media Un Lording	2 MT	
Sheeting and Cladding Desalting	3000 M2	



# | UNITED ARAB EMIRATES



## ABG STAR CEMENT COMPANY LLC RAK, UAE

### Project Hightights

Client	ABG Star Cement Company LLC RAK - UAE
Plant and Machinery Supply	FLSmidth India, FLSmidth Airtech, LOESCHE, LNV Technology and MANN-SIEMENS
Consultants	ERCOM Chennai, Bhagwati Designs (P) Ltd (FLS Designs), Mumbai and Aquatherm Engg. Consultants (India)
Description of Work	Civil Construction, Fabrication, Painting & Erection of Structural Steel, Plate work and Equipment Erection for 6500 TPD Clinker Plant and Captive Power Plant
Time Schedule	24 Months
Period	2007-2009

Scope of Works		Brief Description of the Project
Earth Work Excavation	61,000 M <sup>3</sup>	Location of plant: Adjacent to Emirates Cement plant at Ras Al Khaimah, UAE.
Back Filling	20,000 M <sup>3</sup>	
Reinforcement	6,500 MT	The Preheater Building is an RCC structure of 110 meter height with 8 Floors
Formwork	120,000 M <sup>2</sup>	
Slipform Work	20,000 M <sup>3</sup>	Fabrication of Preheater cyclones and raw mill ducts at site
Concrete Works	51,000 M <sup>3</sup>	
Fabrication & Painting	6,700 MT	Erection of Structures and equipment upto a height of 145 Meters
Erection	14,500 MT	
Refractory	4,500 MT	

# UNITED ARAB EMIRATES |



## BINANI CEMENT FACTORY LLC JEBEL ALI – DUBAI, UAE

Project Hightights		
Client	Binani cement factory LLC, JEBEL ALI, DUBAI /	
Plant and Machinery Supply	Guangsha – China, Thermax – India, Claudius peter – West Germany, Aumund	
Consultants	M/s BDPL, Mumbai	
Description of Work	Clinker Grinding Unit, Civil construction, fabrication, structural erection, equipment erection, insulation, refractory, sheeting & cladding	
Time Schedule	14 Months	
Period	2008 – 2009	
Scope of Works		Brief Description of the Project
Earth Work Excavation	24,000 M <sup>3</sup>	Excavation, shoring, dewatering and civil construction with slip form concreting.
Back Filling	20,000 M <sup>3</sup>	
Reinforcement	1,000 MT	As per Dubai Municipality Standards and guidelines
Formwork	10,000 M <sup>2</sup>	
Slipform Works	10,000 M <sup>2</sup>	Fabrication of Structures and equipments with high painting specifications
Concrete Works	8,500 M <sup>3</sup>	
Fabrication & Painting	1,500 MT	Erection of Chinese equipment blended with European and Indian Equipment
Erection	2,200 MT	
Dewatering	12 Months	Sheeting and Cladding

# | UNITED ARAB EMIRATES



## VANDANA GULF LIME LLC – MUSAFFA-ICAD3, ABU DHABI

Project Hightights		
Project:	Construction of 440 TPD Lime Plant	
Client	Vandana Gulf Lime LLC	
Consultant	Capital Engineering LLC	
Plant and Machinery Supply	Cimprogetti- Italy, MM Despro PVT LTD- India	
Description of Work	Lime Plant – Civil Construction, Fabrication, Structural Erection, Equipment Erection, Insulation, Refractory, Sheetting and Cladding.	
Time Schedule	10 Months	
Period	2013 – 2014	
Scope of Works		Brief Description of the Project
Earth Work Excavation	3637 M <sup>3</sup>	Kin shell Rolling and Supporting Stools Fabricated in Our Work Shop at RAK.  As Per Abu Dhabi Municipality Standards and Guidelines  Pilling, Dewatering and Civil Construction  Fabrication of Structures and Equipment with High Planting Specifications
Piling	263 No's	
Reinforcement	1750 MT	
Formwork	35,000 M <sup>2</sup>	
Concrete Works	1855	
Fabrication & Painting	900 MT	
Erection	2000 MT	
Refractory	520 MT	



# UNITED ARAB EMIRATES |



## STAR STEEL INTERNATIONAL HFZ – SHARJAH, UAE.

Project Hightights		
Client	Star Steel International, HFZ, Sharjah, UAE	
Plant and Machinery Supply	AMB & Slider Plant – Italy	
Consultants	M/s Mecon – India	
Description of Work	Civil Construction, Fabrication, Painting & Equipment Erection of Structural Steel, Equipment Erection,Installation of E&I and MEP works for Cut & Bend Plant, Rebar Mill and Structural Mill	
Time Schedule	36 Months (in 3 phases)	
Period	2007-2009	
Scope of Works		Brief Description of the Project
Earth Work Excavation	10,000 M <sup>3</sup>	Civil Construction, Steel Structure, Fabrication and Erection, Equipment Installation and commissioning, Electrical and Plant Automation for steel Plant at HPZ, Sharjah, UAE  a) 360,000 TPA Rebar Plant b) 240,000 TPA Structural Mill c) 120,000 TPA Cut and Bend Mill
Back Filling	9,000 M <sup>3</sup>	
Reinforcement	5,200 MT	
Formwork	94,0000 M <sup>2</sup>	
Concrete Works	47,000 M <sup>3</sup>	
Fabrication & Painting	700 MT	
Erection	5,000 MT	
Sheeting	37,000 M <sup>2</sup>	
11 KV SubStation, Plant Automation & MEP work		

# UNITED ARAB EMIRATES MAINTENANCE WORKS



Replacement of Heat Exchanger  
at AGB Star Cement – RAK



Replacement of Cement Mill Diaphragm  
at Jebel Ali Cement Factory –Jebel Ali –Dubai



Kiln shell Replacement at Fujerah  
Cement Factory – Dibba – Fujerah



Replacement of Slide shoe Bearing at Pioneer  
Cement Industries LLC–Al Ghail – Ras Al Khaimah



Kiln Tyre Replacement at Fujerah  
Cement – Dibba–Fujerah



Replacement of Mill System Fan  
Impellar at Union Cement Factory  
–Ras Al Khimah



Cement Mill Liners Replacement  
at Gulf Cement Factory  
– Ras Al Khaimah



DIP TUBE REPLACEMENT  
AT PIONEER CEMENT INDUSTRY  
–AL GHAIL–RAS AL KHIMAH





## ARM CEMENT LTD TANGA, TANZANIA

Project Highlights	
Project:	Construction of 4000 TPD Clinkerisation Plant
Client	ARM Cement Ltd, Tanga
Consultant	Kutumbale Consulting Engineers PVT.Ltd, Indore, India(KCEPL)
Plant and Machinery Supply	Walchandnagar Industries Ltd, Walchandnagr - India
Description of Work	4000 TPD Clinkerisation Plant Fabrication Erection 6800 MT
Time Schedule	11 Months
Period	2015
Scope of Works	Brief Description of the Project
Structural Erection	Erection of Kilen Shell by Using Manually fabricated GOLIATH Crane 80 MT Capacity at Site
Painting	
Fabrication	
Equipment Erection	
Commissioning	





## NAEL CEMENT FACTORY RODUCTS, DJIBOUTI

### Project Highlights

Project:	Construction of 80 TPH Grinding Unit
Client	Nael Cement Factory Products
Plant and Machinery Supply	FLS midth India
Description of Work	Re Assembly of Grinding Unit 80 TPH Fabrication & Erection
Time Schedule	14 Months
Period	2016 –2017

### Scope of Works

Fabrication	410 MT
Sand Blasting & Painting	410 MT
Erection Structural	820 MT
Erection Equipment	550 MT
Grinding Media Lording	210 MT
Sheeting	3400 M <sup>2</sup>

### Brief Description of the Project

Fabrication of Structure and Equipment with High Paintin Specifications



## SHAYONA CEMENT CORPORATION LILONGWE – MALAWI, AFRICA

Project Highlights		
Project:	Construction of Clinkerisation plant 650 TPD (1200 TPD Expandable)	
Client	Shayona Cement Corporation	
Consultant	Development Consultants Intl. LTD, Kolkata – INDIA	
Plant and Machinery Supply	Thyssen Krupp Industries India PVT. LTD, Indore, India(KCEPL)	
Description of Work	650 TPD (1200 TPD Expandable) Clinkerisation Plant Fabrication and Equipment Erection 6800 MT	
Time Schedule	11 Months	
Period	2017	
Scope of Works		Brief Description of the Project
Structural Erection	5300 MT	Steel Structure, Fabrication, Painting Erection and Equipment Erection, commissioning for Clinkerisation plant 1200 TPD
Painting	5300 MT	
Fabrication	5300 MT	
Equipment Erection	1500 MT	
Commissioning		



## GULF CEMENT COMPANY – UMM BAB, QATAR

### Project Highlights

Project:	Gulf Cement Company – Umm Bab, Qatar	
Client	FLS midth Demark and Aumund	
Consultant	FLS midth Demark and CPC	
Description of Work	Fabrication, Painting and Erection of Steel structure. Plate Work and Equipment Erection, Refractory, Insulation, Electrical and Plant Automation and Commissioning of 5000 TPD Cement Plant	
Time Schedule	26 Months	
Period	2008 – 2010	
Scope of Works		Brief Description of the Project
Supply of Structural Steel	11,000 MT	Plant Located at 100 km from the Doha City And Near Qatar Cement and Qatar Petroleum.
Fabrication and Painting	11,000 MT	
Erection Structures, Equipments & Pipping	25,000 MT	The Second Large Cement Plant in Qatar
Refractory	4000 MT	
Unloading	20,000 MT	High Quality Steel Fabrication wit Multiple Stages of Inspection
Insulation	42,000 M2	We arranged all Material Supply and Our own Construction Equipments
Electrical & Plant Automation		During peek period, We Deployed Around 1800 Man Power
Commissioning Activities		



# ELECTRICAL AND INSTRUMENTATION WORKS

## Abu Dhabi National Cement Factory – 2x400 TPD Grinding Unit



Abu Dhabi National Cement Factory View



Abu Dhabi National Cement  
– Softstarter & Distribution Panels



Abu Dhabi National Cement Factory – Substation



Abu Dhabi National Cement Factory  
Mill & Separator Drive

### Project Hightights

Project / Owner	M/s. Abu Dhabi National Cement Factory LLC
Equipment Supply	Intercem, Kima – Germany
Consultant	M/s. Capital Engineering
Description of Work	Supply & Installation of E&I Materials for Grinding Plant as Follows 1. Distribution Panels, Soft strater Panels, Weigh feeders, Flow Meters, Lighting, Earthing & Lighting Arrestor MATERilas. 2. Cables trays, Cables, Termination Kit 3. AUTomation Programming, Callibrations & Commissioning
Period / Year	2010 – 2012

# ELECTRICAL AND INSTRUMENTATION WORKS

## M/s. Aditya Birla Star Cement – 4.5 MW WHRSPower Plant



Adity Birla – WHRS –Turnine control and Automatic Synchronisation Panel



Aditya Birla WHRS – SUBSTATION



Aditya Birla WHRS – Cable Cellar & Cable Trays



Aditya Birla WHRS – Distribution Transformer

### Project Hightights

Project / Owner	M/s. Aditya Birla Star Cement, RAK, UAE
Equipment Supply	M/s. FLSmidth Private Limited
Consultant	M/s. FLSmidth Private Limited
Project Description	4.5 MW Waste Heat Recovery Power Plant based on Kalina Cycle which Offers the best enviornmentally Friendly alternative for power generation from low-grade waste heat. it maximizes kW-hrs generated using a closed loop system to recover heat for electricity production without hazard to the enviornment. the kalina cycle uses a mixture of ammonia and water as its working fluid; a common solution used extensively world wide for refrigeration plants
Description of Work	Electrical, instrumentation installation & comissioning
Period / Year	2012 - 2013

# ELECTRICAL AND INSTRUMENTATION WORKS

## M/s. Associated Industries Limited – 500 TPD Lime Plant



Substation



Transformers Installation



Cable Laying



Lighting Installation

### Executed Works :

Installation, Testing & Commissioning of DG, ATS, MCC, VFD, Capacitor Banks, PLC Panels & UPS System

Installation, Testing & Commissioning of Power Sockets and Lighting

Complete Cable Tray Installation, Cable Pulling, Termination, Earthing, Lighting Protection

Installation, Testing & Commissioning of Motors

Installation, Testing & Commissioning of Instruments

Internal / External area Lighting & street Light Installations

Installation, Testing & Commissioning of Fire Alarm System

Installation, Testing & Commissioning of Fire Alarm System

LV Transformers	2 Nos.	Lighting	377 Nos.
LV motors control centers, VFD, Softstarter Panel	5 Nos.	Power Sockets	43 Nos.
Capacitor Bank	1 Nos.	Power Cabling	12,505 Mtr.
Distribution Boards	13 Nos.	Control & Signal Cabling	22,345 Mtr.
UPS System	1 Nos.	Lighting Cabling	20,000 Mtr.
DCS Panels	2 Nos.	Fire & Gas Detection Cabling	1625 Mtr.
Operation Station	1 Nos.	Earthing Cabling	6400 Mtr.
Local Control Panels	41 Nos.	Power Cable Termination	544 Nos.
Instruments	325 Nos.	Control Signal Cable Terminations	1150 Nos.
Field Junction Box	29 Nos.	Lighting Cable Termination	5940 Nos.



# ELECTRICAL AND INSTRUMENTATION WORKS

## M/s. Gulf Cement Company – 5000 TPD Intergrated Cement Plant



FEEDERS CABLE ROUTING –  
GULF CEMENT QATAR



GULF CEMENT QATAR



KILN INLET ANALYZER ROOM AND  
PROBE – GULF CEMENT QATAR



GULF CEMENT QATAR – CCR –  
X RAY LAB & ROBO LAB



GULF CEMENT QATAR



SUBSTATION – GULF CEMENT QATAR

### Project Hightights

Project / Owner	Gulf Cement Company, Umm Bad, Qatar
Equipment Supply	FLSmidth Demark and Aumund
Consultant	FLSmidth Demark and CPC
Project Description	5000 TPD Integrated Cement Plant, The Second Largest Cement Plant In Qatar
Description of Work	Installation of complete plant electrical panels, tranformers, Distribution panels, Lightings, Earthing & Lighting arrestor. Installation of Automation Control Systems & Instruments
Time Schedule	14 Months
Period / Year	2008 – 2009

# ELECTRICAL AND INSTRUMENTATION WORKS

## M/s. Oman Cement Company – 150 TPH Cement Grinding Unit



Substation



IO Panels



Cable Tray Installation



Oman Cement Company Overall View

### Project Highlights

Project / Owner	M/s. Oman Cement Company (S.A.O.G), Muscat, Sulatanate of Oman
Client	M/s. FLSmidth Private Limited
Equipment Supply	M/s. FLSmidth Private Limited
Consultant	M/s. ERCOM Engineers Private Limited
Description of Work	Installation, Testing & Commissionin of Electrical, Instrumentation & Plant Automation System For 150 TPH Cement Grinding Unit
Time Schedule	14 Months
Period / Year	2015 - 2016

### Executed Works :

#### Electrical System :

Installation, Testing and Commissioning of MV/LV Transformers & Bsbusts

Installation, Testing and Commissioning of MV/LV Capacitor Banks

Installation, Testing and Commissioning of MV/LV panels & AC/DC - VFD/VVVF drives, Soft, starter drives, UPS, systems, DC distribution with battery banks.

Installation, Testing and Commissioning of HT/LT Motors upto 5400KW MV motor with LRS starter

Installation, Testing and Commissioning of EOT Crane, Hoist

Cable Tray, Concealed/ Open Conduit Systems Installation

HV/LV Cabling, termination & testing

Internal / External area Lighting & Streelight Installations.

Primary earthing, Secondary earthing and lighting protection systems installations.

# ELECTRICAL AND INSTRUMENTATION WORKS

**M/s. Star Steel International LLC**



Substation



IO Panels



Electrical Hoists & Cranes



Cable Tray Installation

## Project Hightights

Project / Owner	Star Steel International, HFZ, Sharjah, UAE
Equipment Supply	AMB & Slider Plant - Italy
Consultant	M/s Mecon - India
Project Description	a). 360,000 TPA Rebar Plant b). 240,000 TPA Structural Mill c). 120,000 TPA Cut and Bend Mill
Description of Work	Supply & installation of E&I, Automation Materials & MEP Works for Cut & Bend, Rebar Mill & Strustural MILL
Time Schedule	36 Monts (in 3 Phases)
Period / Year	2007 - 2009

## Executed Works :

Supply & Installation of the following

- LT/HT Switchgears, Distribution Boards, Capacitor banks.
- Power cable, Control cable, Signal & Communications Cable.
- Cable Tray Syatems, Conduits, Junction Boxes.
- Earthing & Lighiting Materials
- Indoor & Outdoor Lighting
- MEP works (Drainage, Water Supply Plumbing Works)
- Fire Alarm & Fire Fighting Systems





Star Steel International Hfz  
Sharjah, Uae



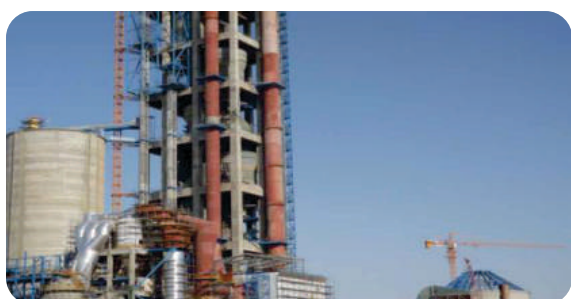
Al Madina Cement  
Buraimi, Oman



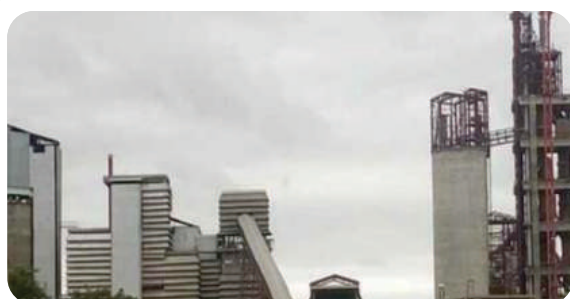
Arm Cement Ltd  
Tanga- Tanzania



Binani Cement Factory Llc  
Jabal Ali - Dubai, Uae



Gulf Cement Company  
Umm Bab, Qatar



Shayona Cement Corporation  
Lilongwe - Malawi, Africa



Vandana Gulf Lime Llc  
Musaffa- Icad3, Abu Dhabi



Associated Industries Limited  
Sfz Salalah, Oman



Replacement of Kiln Girth Gear  
Raysut Cement - Salah



Replacement of Cement Mill Diaphragm  
at Jebel Ali Cement Factory  
Jebel Ali, Dubai



Kiln shell Replacement at Fujerah  
Cement Factory - Dibba - Fujerah



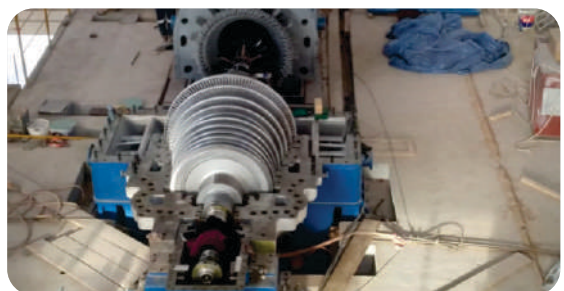
Replacement of Slide shoe Bearing  
at Pioneer Cement Industries LLC  
Al Ghail - Ras Al Khaimah



Kiln Tyre Replacement at Fujerah  
Cement - Dibba - Fujerah



T.G Building Generator Installation



T.G Building Run Out Test



### **BAVA MIDDLE EAST LLC**

Post Box No: 328072, BME Camp  
Behind Aditya Birla Start Cement, Adhen, Ras-Al-Khaimah, UAE  
Contact No: +971 72357036 / +971 55 6123673 / +971 56 7644329  
SULTANATE OF OMAN

### **HAPBCO LLC**

Post Box No: 2717, P.C. 133, Al Khuwair, Muscat, Sultanate of Oman,  
Phone: +96891254733, Email: selvan@hapbcome.com

### **KENYA**

HAJEE A P BAVA & Co KENYA LIMITED  
Post Box No: 1292, Sarit Centre, Parklands, Nairobi, Kenya  
Phone: 0254795287564 / 2544781093323  
Email: selvan@apbavaengg.com / Sudheesh@apbavaengg.com  
REGIONAL OFFICES – HAPBCO (P) LTD

### **HYDERABAD**

HAPBCO Tower, Plot No.3, 7-1-27/1, 2nd & 3rd Floor,  
Ameerpet, Hyderabad – 500 016 Telangana, India  
Phone: +91 40 67194500, Fax: +91 66416111, Email: apbavahyd@hapbco.co.in

### **UDAIPUR**

HAPBCO Tower, Plot No: 75, Central Public School Road,  
New Bhupalpura, Udaipur – 01 Rajasthan, India  
Phone: 0294 2413035, +91 9251100977, Email: hapbco@dtainfosys.net

### **BHUBANESWAR**

Plot No. 1184/2182, Juga Jahnabi Plaza, 2nd Floor,  
Bomikkal, Bhubaneswar – 10 Orissa, India  
Phone: +91 6742582549, Email: ro\_orissa@hajeerbava.com

### **AHMEDABAD**

Plot No. 88 6th Floor, Room No. 117, Symmers,  
Sanand – Sarkhej Road, Sarkhej, Okaf – Gujrath – 10, India  
Phone: 079 29707821 / 079 29707822, Email: roahmedabad@hapbco.co.in







# HAPBCO LLC

☎ +968 24597331, ✉ info@hapbcome.com

🌐 www.hapbco.co, 📞 +968 91909024

📍 P.O Box: 2717, P.C:133, Muscat, Sultanate of OMAN