

“Let’s Join Hands
And March Towards A New Dawn,
Let’s Build A Dream.”



HAPBCO LLC

- Installation Of Heavy Industry Machinery For Power, Steel, Cement, Lime, Minerals Etc...
- Industrial Upgradation And Retrofitting
- Industrial Civil Constructions
- Industrial Scheduled And Breakdown Maintenance Jobs
- On-shore And Off-shore Pipe Lines
- Installation Of Oil & Gas & Petrochemical Works
- Residential and Commercial buildings
- Facilities management



NATURE OF WORKS

Civil Construction

- Piling
- Dewatering & Water Proofing
- Shoring
- Slip Form Rcc Storage Silos
- Pre-stressing
- Industrial Foundations
- Super Structures

Structural And Plate Work

- Fabrication
- Industrial Protective coating
- Sheeting and Cladding
- Erection

Equipment Installation & Maintenance

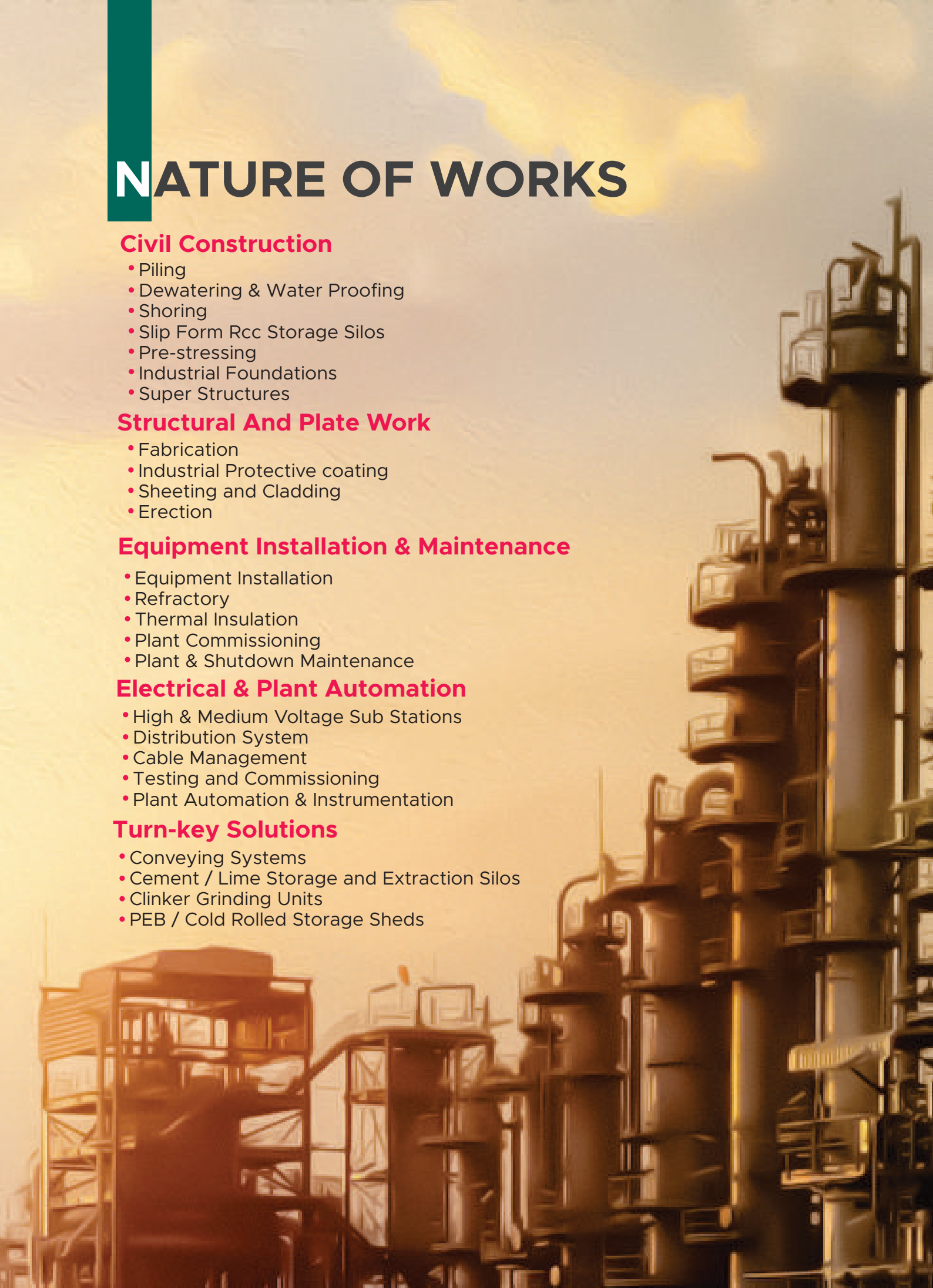
- Equipment Installation
- Refractory
- Thermal Insulation
- Plant Commissioning
- Plant & Shutdown Maintenance

Electrical & Plant Automation

- High & Medium Voltage Sub Stations
- Distribution System
- Cable Management
- Testing and Commissioning
- Plant Automation & Instrumentation

Turn-key Solutions

- Conveying Systems
- Cement / Lime Storage and Extraction Silos
- Clinker Grinding Units
- PEB / Cold Rolled Storage Sheds



SALALAH

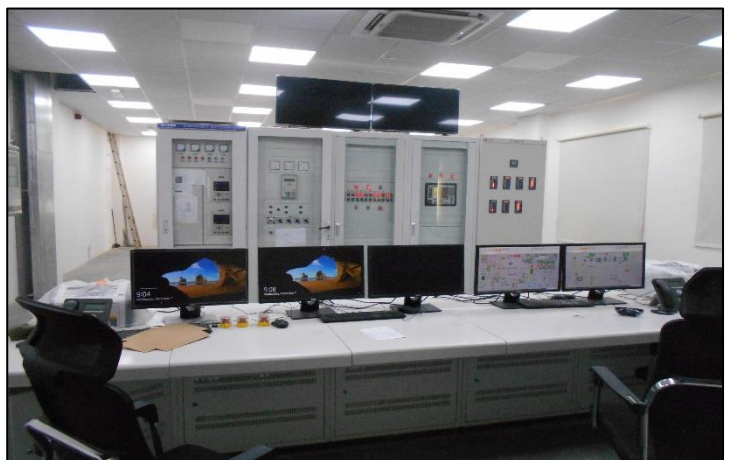
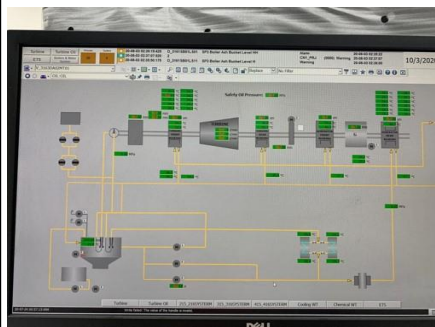
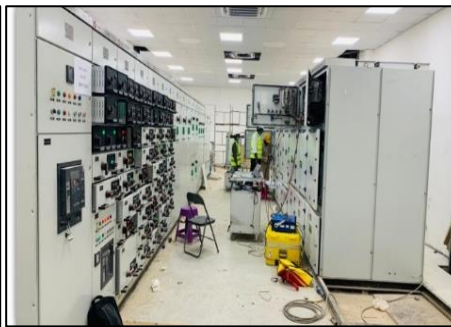
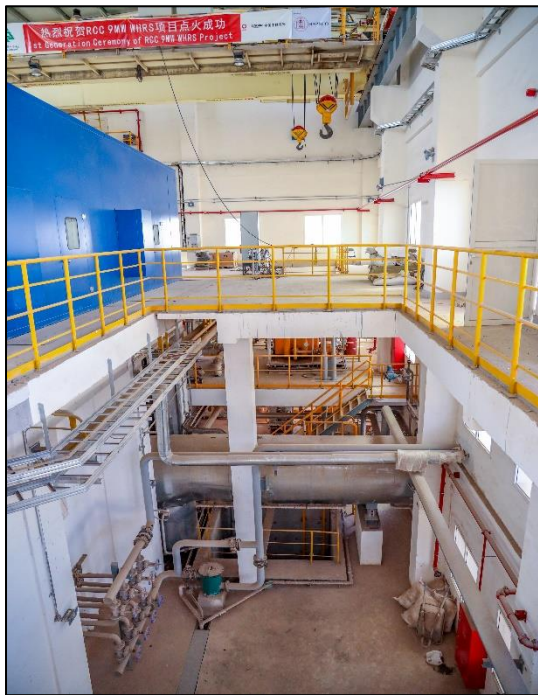
RAYSUT CEMENT COMPANY SALALAH, OMAN



PROJECT NAME	09 MW WHR BASED POWER PLANT FOR LINE-II, LINE-III & LINE-IV
CLIENT	M/S. RAYSUT CEMENT COMPANY, SALALAH, OMAN
CONSULTANT	M/S. HOLTECH
OEM SUPPLIER	M/S. SINOMA OVERSEAS DEVELOPMENT CO., LTD
SCOPE OF WORK	<ul style="list-style-type: none">• Structural Fabrication• Structural & Equipment Installation• Electrical & instrumentation installation• Refractory & cladding installation• Pipeline installation

NAME	09 MW WHR BASED POWER PLANT FOR LINE-II, LINE-III & LINE-IV
CLIENT	M/S. RAYSUT CEMENT COMPANY, SALALAH, OMAN
CONSULTANT	M/S. HOLTECH
OEM SUPPLIER	M/S. SINOMA MIDDLE EAST
SCOPE OF WORK	<ul style="list-style-type: none"> ▪ Transformer & 11kv MV Switchgear installation ▪ LV Switch gear installation (MCC, Capacitor Bank, LDB) ▪ 11kv Turbine & Generator erection along with Control, Synchronization metering panels installation. ▪ DCS server, IO, field panel and CCR installation ▪ Cable tray installation. ▪ MV/LV/control/signal laying & terminations. ▪ Lighting, Earthing & Lightning arrestor installation. ▪ All process instruments, tubing and loop checking. ▪ Testing & Commissioning Assistance

PROJECT PHOTOS:



ELECTRICAL AND INSTRUMENTATION WORKS

M/s. Gulf Cement Company – 5000 TPD Intergrated Cement Plant



FEEDERS CABLE ROUTING –
GULF CEMENT QATAR



GULF CEMENT QATAR



KILN INLET ANALYZER ROOM AND
PROBE – GULF CEMENT QATAR



GULF CEMENT QATAR – CCR –
X RAY LAB & ROBO LAB



GULF CEMENT QATAR



SUBSTATION – GULF CEMENT QATAR

Project Hightights

Project / Owner	Gulf Cement Company, Umm Bad, Qatar
Equipment Supply	FLSmidth Demark and Aumund
Consultant	FLSmidth Demark and CPC
Project Description	5000 TPD Integrated Cement Plant, The Second Largest Cement Plant In Qatar
Description of Work	Installation of complete plant electrical panels, transformers, Distribution panels, Lightings, Earthing & Lighting arrestor. Installation of Automation Control Systems & Instruments
Time Schedule	14 Months
Period / Year	2008 – 2009

ELECTRICAL AND INSTRUMENTATION WORKS

Abu Dhabi National Cement Factory – 2x400 TPD Grinding Unit



Abu Dhabi National Cement Factory View



Abu Dhabi National Cement
- Softstarter & Distribution Panels



Abu Dhabi National Cement Factory - Substation



Abu Dhabi National Cement Factory
Mill & Separator Drive

Project Hightights

Project / Owner	M/s. Abu Dhabi National Cement Factory LLC
Equipment Supply	Intercecm, Kima – Germany
Consultant	M/s. Capital Engineering
Description of Work	Supply & Installation of E&I Materials for Grinding Plant as Follows 1. Distribution Panels, Soft strater Panels, Weigh feeders, Flow Meters, Lighting, Earthing & Lighting Arrestor MAterials. 2. Cables trays, Cables, Termination Kit 3. AUtomation Programming, Callibrations & Commissioning
Period / Year	2010 - 2012

UNITED ARAB EMIRATES



ABG STAR CEMENT COMPANY LLC RAK, UAE

Project Highlights

Project	Construction of 4.75 MW Power Plant - Waste Heat Recovery System
Client	ABG Star Cement Company LLC RAK - UAE
Plant and Machinery Supply	FLSmidth, India
Description of Work	Civil Construction, Fabrication, Painting & Erection of Structural Steel, Plate work, Equipment Erection, LP & HP Piping and E & I
Time Schedule	12 Months
Period	2012 - 2013

Scope of Works

Earth Work	3300
Reinforcement	300 MT
Foamwork	9500 M2
Concrete Works	2500 M3
Water Proofing	500 M2
Fabricatin and Painting	1000 MT
Erection	2100 MT
LO & HP Piping	20,000 Inch Dia
E & I Installation Refractory Works	

Brief Description of the Project

Cyclone Building 32 Mtr Height with RCC with 05 Floor
Fabrication and Painting at Site

Boiler Tube Erected with 500 MT Capacity Mobile Crane

Cyclone and Expansion Joints Fabrication at Site

SALALAH

AL-NAMARIQ CO.FOR MINING (SFZ) LLC – SALALAH, OMAN



PROJECT NAME	CONSTRUCTION AND INSTALLATION OF 300 TPD LIME CALCINATION PLANT
CLIENT	M/S. AL-NAMARIQ CO. FOR MINING (SFZ) LLC, SALALAH, OMAN
CONSULTANT	M/S. MAERZ & M/S.PARGET MAKINA & M/S. SECMEC
OEM SUPPLIER	M/S. MAERZ & M/S.PARGET MAKINA
SCOPE OF WORK	<ul style="list-style-type: none">• Fabrication and Installation of 300TPD MAERZ LIME KILN• Civil construction work of Process Buildings.• Fabrication and installation of Structural & Plate works• Equipment Installation• Electrical & instrumentation installation• Equipment Insulation• Refractory & cladding installation• Compressed Air, Natural Gas & Hydraulic• Pipeline installation

ELECTRICAL AND INSTRUMENTATION WORKS

M/s. Aditya Birla Star Cement – 4.5 MW WHRSPower Plant



Aditya Birla – WHRS -Turnine control and Automatic Synchronisation Panel



Aditya Birla WHRS – SUBSTATION



Aditya Birla WHRS – Cable Cellar & Cable Trays



Aditya Birla WHRS – Distribution Transformer

Project Hightights

Project / Owner	M/s. Aditya Birla Star Cement, RAK, UAE
Equipment Supply	M/s. FLSmidth Private Limited
Consultant	M/s. FLSmidth Private Limited
Project Description	4.5 MW Waste Heat Recovery Power Plant based on Kalina Cycle which Offers the best enviornmentally Friendly alternative for power generation from low-grade waste heat. it maximizes kW-hrs generated using a closed loop system to recover heat for electricity production without hazard to the enviornment. the kalina cycle uses a mixture of ammonia and water as its working fluid; a common solution used extensively world wide for refrigeration plants
Description of Work	Electrical, instrumentation installation & comissioning
Period / Year	2012 - 2013

ELECTRICAL AND INSTRUMENTATION WORKS

M/s. Associated Industries Limited –
500 TPD Lime Plant



Substation



Transformers Installation



Cable Laying



Lighting Installation

Executed Works :

Installation, Testing & Commissioning of DG, ATS, MCC, VFD, Capacitor Banks, PLC Panels & UPS System

Installation, Testing & Commissioning of Power Sockets and Lighting

Complete Cable Tray Installation, Cable Pulling, Termination, Earthing, Lighting Protection

Installation, Testing & Commissioning of Motors

Installation, Testing & Commissioning of Instruments

Internal / External area Lighting & street Light Installations

Installation, Testing & Commissioning of Fire Alarm System

Installation, Testing & Commissioning of Fire Alarm System

LV Transformers	2 Nos.	Lighting	377 Nos.
LV motors control centers, VFD, Sotstarter Panel	5 Nos.	Power Sockets	43 Nos.
Capacitor Bank	1 Nos.	Power Cabling	12,505 Mtr.
Distribution Boards	13 Nos.	Control & Signal Cabling	22,345 Mtr.
UPS System	1 Nos.	Lighting Cabling	20,000 Mtr.
DCS Panels	2 Nos.	Fire & Gas Detection Cabling	1625 Mtr.
Operation Station	1 Nos.	Earthing Cabling	6400 Mtr.
Local Control Panels	41 Nos.	Power Cable Termination	544 Nos.
Instruments	325 Nos.	Control Signal Cable Terminations	1150 Nos.
Field Junction Box	29 Nos.	Lighting Cable Termination	5940 Nos.

UNITED ARAB EMIRATES |



STAR STEEL INTERNATIONAL HFZ – SHARJAH, UAE.

Project Highlights	
Client	Star Steel International, HFZ, Sharjah, UAE
Plant and Machinery Supply	AMB & Slider Plant – Italy
Consultants	M/s Mecon – India
Description of Work	Civil Construction, Fabrication, Painting & Equipment Erection of Structural Steel, Equipment Erection, Installation of E&I and MEP works for Cut & Bend Plant, Rebar Mill and Structural Mill
Time Schedule	36 Months (in 3 phases)
Period	2007–2009
Scope of Works	Brief Description of the Project
Earth Work Excavation	Civil Construction, Steel Structure, Fabrication and Erection, Equipment Installation and commissioning, Electrical and Plant Automation for steel Plant at HPZ, Sharjah, UAE a) 360,000 TPA Rebar Plant b) 240,000 TPA Structural Mill c) 120,000 TPA Cut and Bend Mill
Back Filling	
Reinforcement	
Formwork	
Concrete Works	
Fabrication & Painting	
Erection	
Sheeting	
11 KV SubStation, Plant Automation & MEP work	

ELECTRICAL AND INSTRUMENTATION WORKS

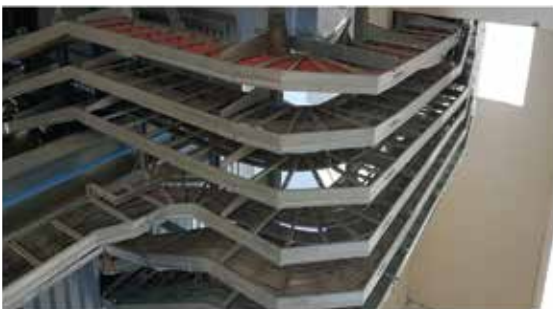
M/s. Oman Cement Company – 150 TPH Cement Grinding Unit



Substation



IO Panels



Cable Tray Installation



Oman Cement Company Overall View

Project Highlights

Project / Owner	M/s. Oman Cement Company (S.A.O.G), Muscat, Sultanate of Oman
Client	M/s. FLSmidth Private Limited
Equipment Supply	M/s. FLSmidth Private Limited
Consultant	M/s. ERCOM Engineers Private Limited
Description of Work	Installation, Testing & Commissioning of Electrical, Instrumentation & Plant Automation System For 150 TPH Cement Grinding Unit
Time Schedule	14 Months
Period / Year	2015 - 2016

Executed Works :

Electrical System :

Installation, Testing and Commissioning of MV/LV Transformers & Busbars

Installation, Testing and Commissioning of MV/LV Capacitor Banks

Installation, Testing and Commissioning of MV/LV panels & AC/DC - VFD/VVVF drives, Soft, starter drives, UPS, systems, DC distribution with battery banks.

Installation, Testing and Commissioning of HT/LT Motors upto 5400KW MV motor with LRS starter

Installation, Testing and Commissioning of EOT Crane, Hoist

Cable Tray, Concealed/ Open Conduit Systems Installation

HV/LV Cabling, termination & testing

Internal / External area Lighting & Streetlight Installations.

Primary earthing, Secondary earthing and lightning protection systems installations.

ELECTRICAL AND INSTRUMENTATION WORKS

M/s. Star Steel International LLC



Substation



IO Panels



Electrical Hoists & Cranes



Cable Tray Installation

Project Highlights

Project / Owner	Star Steel International, HFZ, Sharjah, UAE
Equipment Supply	AMB & Slider Plant - Italy
Consultant	M/s Mecon - India
Project Description	a). 360,000 TPA Rebar Plant b). 240,000 TPA Structural Mill c). 120,000 TPA Cut and Bend Mill
Description of Work	Supply & installation of E&I, Automation Materials & MEP Works for Cut & Bend, Rebar Mill & Strustural MILL
Time Schedule	36 Monts (in 3 Phases)
Period / Year	2007 - 2009

Executed Works :

- Supply & Installation of the following
- LT/HT Switchgears, Distribution Boards, Capacitor banks.
- Power cable, Control cable, Signal & Communications Cable.
- Cable Tray Syatems, Conduits, Junction Boxes.
- Earthing & Lighiting Materials
- Indoor & Outdoor Lighting
- MEP works (Drainage, Water Supply Plumbing Works)
- Fire Alarm & Fire Fighting Systems

| SULTANATE OF OMAN



AL MADINA CEMENT, BURAIMI, OMAN

Project Hightights		
Client	Al Madina Cement, Buraimi, Oman	
Plant and Machinery Supply	Beijing Lianchuang Tech, Co. Ltd, China	
Consultants	ERCOM - INDIA	
Description of Work	Construction of Civil RCC Structure, Fabrication and Erection of Steel Structures, Equipment Erection, Electrical & Plant Automation System for 2500 TPD Cement Plant.	
Time Schedule	18 Months	
Period	2009-2010	
Scope of Works	Brief Description of the Project	
RCC Civil Works	45,000 M ³	Sultanate of Oman's 1st private sector cement plant (AMC) at Al Buraimi, the north western town of Oman, bordering Al Ain, Abu Dhabi Emirate. Al Madina Cement Co. LLC owns Oman Chemical & Pharmaceuticals Co. LLC, one of the well established businessgroups in the Sultanate is of Oman. The Cement Plant is constructed with 2500 TPD capacity, with a scope for similar 2500 TPD capacity second line construction in future. RCC Clinker silos 2 Nos each of 11,000 Tons Capacity.
Reinforcement Steel	5,000 MT	
Fabrication & Painting	1,500 MT	
Erection	1,500 MT	
Electrical & Plant Automation		



HAPBCO LLC

+968 24597331, info@hapbcome.com

www.hapbco.co, +968 91909024

P.O Box: 2717, P.C:133, Muscat, Sultanate of OMAN